

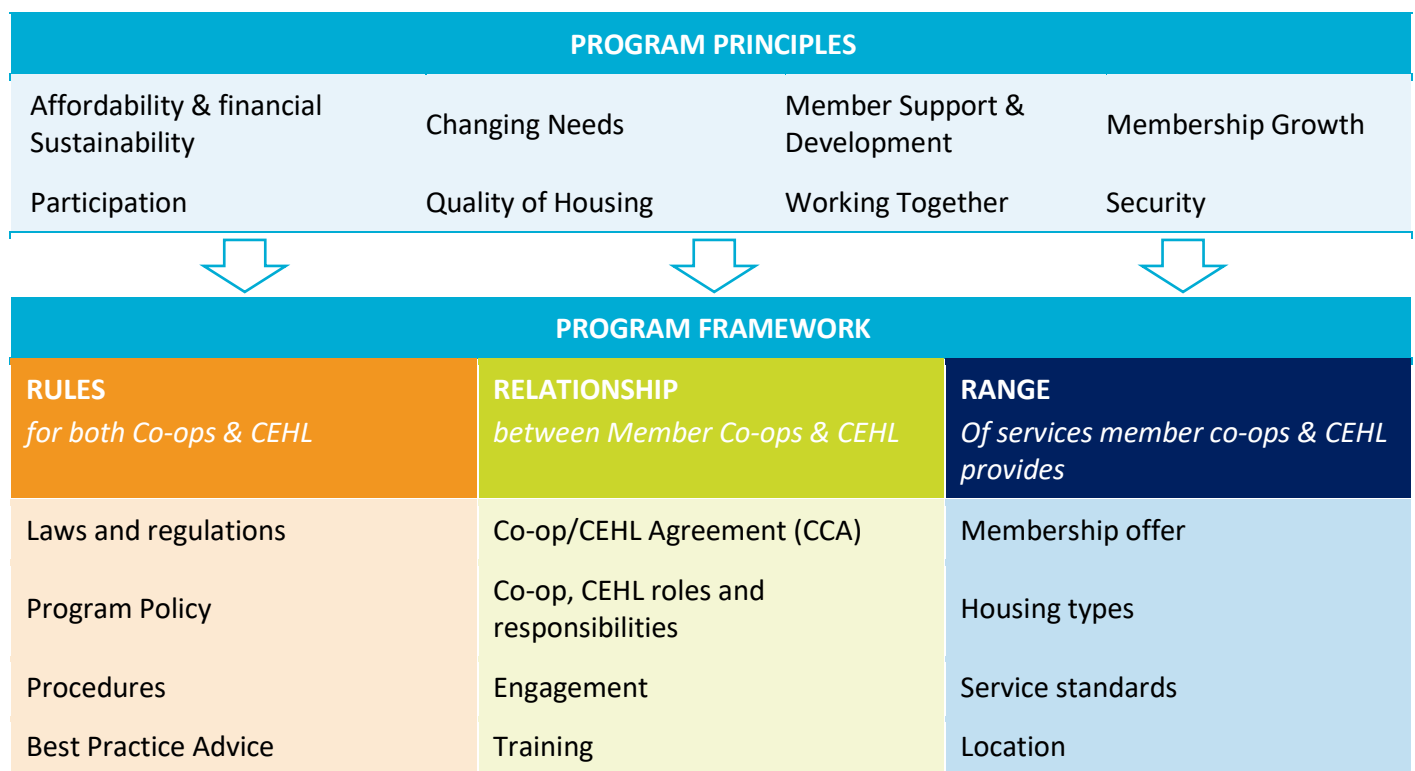
# THE CO-OPERATIVE HOUSING PROGRAM FRAMEWORK

## FACT SHEET 3 OF 4



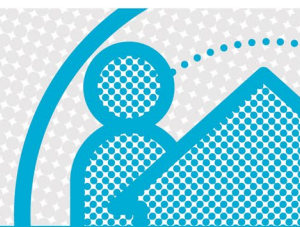
The 'Program Framework' describes all the elements that make our program work: the roles co-ops and CEHL will fulfil, the rules we must all follow, the relationships CEHL and co-ops have in working together and the range of services our Program will offer. The Program Framework can be updated by a decision of the CEHL Board.

The [Program Principles](#) outline the key considerations for all decision-making within the CEHL Co-operative Housing Program.



See the following tables for more detail about the elements of the framework

RULES FOR BOTH CO-OPS AND CEHL	
<b>Co-ops</b> <ul style="list-style-type: none"> <li>Co-operative National Law</li> <li>Australian Charities and Not-for-profits Commission (ACNC)</li> <li>Residential Tenancies Act (RTA)</li> <li>Housing Registrar Performance Standards</li> <li>Funding requirements</li> <li>Co-op/CEHL Agreement (CCA)</li> <li>Program Policies &amp; Procedures</li> <li>Best practice advice</li> </ul>	<b>CEHL</b> <ul style="list-style-type: none"> <li>Corporate Law</li> <li>Australian Charities and Not-for-profits Commission (ACNC)</li> <li>Residential Tenancies Act (RTA)</li> <li>Housing Registrar Performance Standards</li> <li>Funding requirements</li> <li>Co-op/CEHL Agreement (CCA)</li> <li>Program Policies &amp; Procedures</li> <li>Best practice advice</li> </ul>



### RELATIONSHIP BETWEEN MEMBER CO-OPS AND CEHL

#### Co-ops

- Ensure members are informed of upcoming challenges and opportunities
- Consult with members re key co-op decisions.
- Represent member views in Program engagement.
- Be accountable to members and CEHL for Program compliance

#### Co-ops role

- Work together to offer value to members
- Decide how to influence Program development
- Choose whether to take responsibility for tenancy and property management on behalf of CEHL
- Manage co-op business and governance

#### CEHL

- Ensure member co-ops are informed of upcoming challenges and opportunities
- Consult with membership regarding key Program decisions.
- Be accountable to member co-ops, government and Housing Registrar for Program compliance

#### CEHL role

- Provide information to assist member co-ops and the Board to make decisions
- Program management and development, reflecting member co-op input
- Manage Program finances and assets
- Manage referral systems
- Offer advice, resources & training to co-ops
- Monitor and meet compliance standards

### RANGE OF SERVICES MEMBER CO-OPS & CEHL PROVIDES

#### Co-ops

- Activities to support their purpose as described in the Future Directions Plan

#### CEHL

- Develop and maintain properties to support co-op Future Directions Plans
- Provide services and resources that offer a range of options for co-ops and assist co-ops to meet compliance requirements

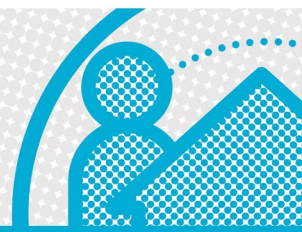
## When is the Framework updated?

The Program Framework is formally reviewed on a regular basis, but updates can also be triggered by changes to laws, regulations or finances that impact our Program.

There are also opportunities that from time-to-time require CEHL to assess whether they suit our current

framework or whether a change or addition to our Program Framework needs to be made.

Regardless of the reason, all proposals for change need to be considered in the light of our Program Principles, member co-op feedback and the strategic plans of the CEHL Board before being adopted.

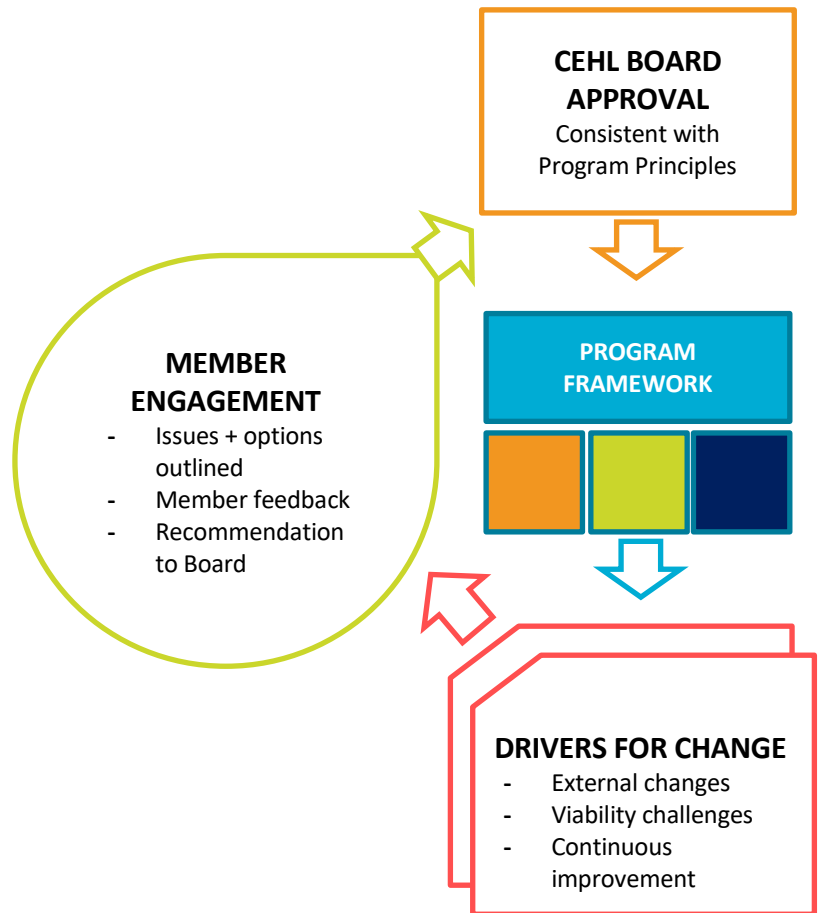


## Adaptable Framework

The Program Framework is a set of roles, relationships and rules that makes sure Program goals can be met. These will change from time to time, to adapt to changes in the economy, external laws and regulations.

The Program Framework is also influenced by the ideas and feedback from Program members, as well as new knowledge and ideas developed over time. As these things change, so does our Program Framework.

Rapid changes in the external environment over recent years has stressed the importance of carefully planning the way our Program Framework changes, ensuring that it remains true to our purpose and supports our future plans.



## MORE INFORMATION

For a complete understanding of the CEHL Co-operative Housing Program also read the following Fact Sheets:

- + **Program Summary**
- + **Program Governance**
- + **Program Influence**