

CO-OPERATIVE HOUSING PROGRAM SUMMARY

FACT SHEET 1 OF 4



A ‘program’ is an organised system of services, activities, or opportunities that help achieve an outcome. The CEHL Co-operative Housing Program, “Program” is the interrelated activities and elements that delivers an effective, sustainable co-operative housing program.

Founded on Co-operative Principles, the Program offers support and strength, working for the benefit of all members.

Working together



CEHL and member co-operatives work together in partnership to provide the Co-operative Housing Program.

Member co-operatives and CEHL each have roles and responsibilities in the management and provision of the Program, outlined in the Co-operative/CEHL Agreement.

CEHL’S ROLE + RESPONSIBILITIES

Program management

- Developing and maintaining a framework for program decision making, engagement and delivery
- Professional management of finances, grant applications and insurance
- Advocacy for co-ops and housing solutions
- Facilitate opportunities for member involvement
- Security of tenure for co-op members if a co-op winds up or needs interim support

Property portfolio management

- Provide co-ops with access to the Program’s property portfolio
- Professional management of property upgrades and development
-

Co-op resources

- Advice, resources and training to assist co-ops with their governance, business practices, tenancy and property management

Managing legal and compliance requirements

- Centralised management of reporting and relationship with government and regulators

MEMBER CO-OP’S ROLE + RESPONSIBILITIES

Co-operative governance

- As independent legal entities, member co-operatives make their own co-op governance and financial management within the Program framework
- Select and induct new co-op members
- Build thriving communities and empower members
- Planning for their co-op future needs

Program Governance

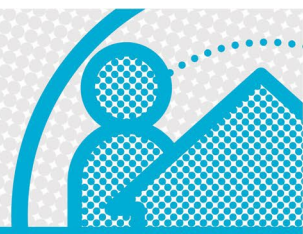
- Elect five co-op member directors to the CEHL Board one of whom will become Board Chair
- Co-op members are appointed to Board Committees and Advisory Groups

Landlord responsibilities (if co-ops choose)

- Managing tenancy and maintenance services in accordance with program standards

Active Program engagement

- As Program members, co-ops participate in program discussions, development of program policy and the direction of the Program



Program membership means . . .

- Specific responsibilities**
 Of both CEHL and member co-operatives as set out in Program principles and policies, and the Co-operative/CEHL Agreement
- Shared challenges - shared solutions**
 Members have access to information to understand issues and opportunities, and opportunity to participate in developing solutions
- Benefits - obligations**
 Members clearly understand what the program can offer, what their contribution to the program is, and what responsibilities only their co-op can meet
- Program interest**
 Working toward the long term, collective interest of all member co-ops

Co-op Led Program

The CEHL Board is committed to a ‘Co-op-Led Program’ to make sure that how we deliver now, and how we plan-for-the future reflects what is important to co-ops.

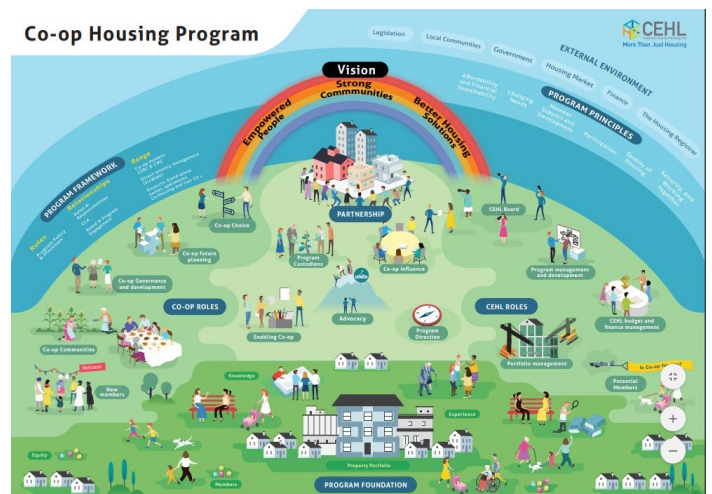
The Program changes over time, and co-ops have the right and the opportunity to influence and shape its direction.

This is achieved by providing member co-ops opportunities to engage in Program discussions that have greatest influence on Program direction.

Common Equity Programs

Co-ops in New South Wales and South Australia have developed their own Common Equity model.

Co-ops in Canada and Western Australia have shown great interest in the CEHL Co-operative Housing Program model.



Watch the Co-op Housing Program video
<https://vimeo.com/302752629>

MORE INFORMATION

For a complete understanding of the CEHL Co-operative Housing Program also read the following Fact Sheets:

- + [Program Framework](#)
- + [Program Governance](#)
- + [Program Influence](#)