

# CO-OPERATIVE HOUSING PROGRAM SUMMARY

## FACT SHEET 1 OF 4



A ‘program’ is an organised system of services, activities, or opportunities that help achieve an outcome. The CEHL Co-operative Housing Program, “Program” is the interrelated activities and elements that delivers an effective, sustainable co-operative housing program.

Founded on Co-operative Principles, the Program offers support and strength, working for the benefit of all members.

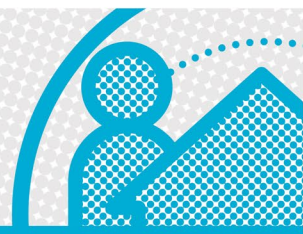
## Working together



CEHL and member co-operatives work together in partnership to provide the Co-operative Housing Program.

Member co-operatives and CEHL each have roles and responsibilities in the management and provision of the Program, outlined in the Co-operative/CEHL Agreement.

CEHL'S ROLE + RESPONSIBILITIES	MEMBER CO-OP'S ROLE + RESPONSIBILITIES
<p><b>Program management</b></p> <ul style="list-style-type: none"> <li>Developing and maintaining a framework for program decision making, engagement and delivery</li> <li>Professional management of finances, grant applications and insurance</li> <li>Advocacy for co-ops and housing solutions</li> <li>Facilitate opportunities for member involvement</li> <li>Security of tenure for co-op members if a co-op winds up or needs interim support</li> </ul>	<p><b>Co-operative governance</b></p> <ul style="list-style-type: none"> <li>As independent legal entities, member co-operatives make their own co-op governance and financial management within the Program framework</li> <li>Select and induct new co-op members</li> <li>Build thriving communities and empower members</li> <li>Planning for their co-op future needs</li> </ul>
<p><b>Property portfolio management</b></p> <ul style="list-style-type: none"> <li>Provide co-ops with access to the Program's property portfolio</li> <li>Professional management of property upgrades and development</li> </ul>	<p><b>Program Governance</b></p> <ul style="list-style-type: none"> <li>Elect five co-op member directors to the CEHL Board one of whom will become Board Chair</li> <li>Co-op members are appointed to Board Committees and Advisory Groups</li> </ul>
<p><b>Co-op resources</b></p> <ul style="list-style-type: none"> <li>Advice, resources and training to assist co-ops with their governance, business practices, tenancy and property management</li> </ul>	<p><b>Landlord responsibilities (if co-ops choose)</b></p> <ul style="list-style-type: none"> <li>Managing tenancy and maintenance services in accordance with program standards</li> </ul>
<p><b>Managing legal and compliance requirements</b></p> <ul style="list-style-type: none"> <li>Centralised management of reporting and relationship with government and regulators</li> </ul>	<p><b>Active Program engagement</b></p> <ul style="list-style-type: none"> <li>As Program members, co-ops participate in program discussions, development of program policy and the direction of the Program</li> </ul>



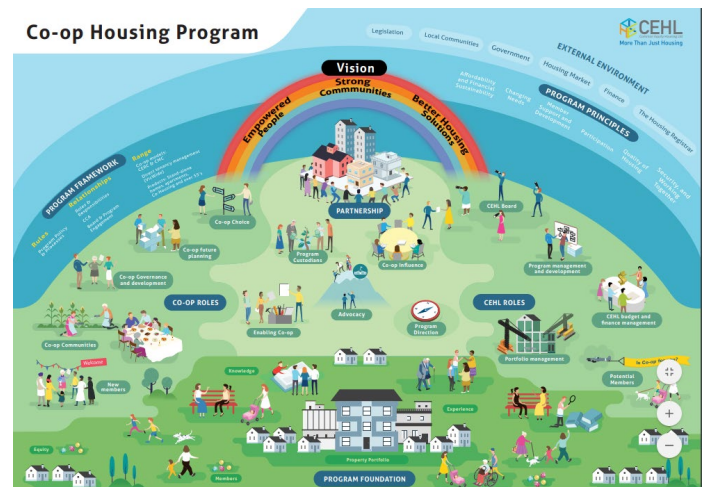
## Program membership means . . .

- Specific responsibilities**  
 Of both CEHL and member co-operatives as set out in Program principles and policies, and the Co-operative/CEHL Agreement
- Shared challenges - shared solutions**  
 Members have access to information to understand issues and opportunities, and opportunity to participate in developing solutions
- Benefits - obligations**  
 Members clearly understand what the program can offer, what their contribution to the program is, and what responsibilities only their co-op can meet
- Program interest**  
 Working toward the long term, collective interest of all member co-ops

## Common Equity Programs

Co-ops in New South Wales and South Australia have developed their own Common Equity model.

Co-ops in Canada and Western Australia have shown great interest in the CEHL Co-operative Housing Program model.



Watch the Co-op Housing Program video  
<https://vimeo.com/302752629>

## Co-op Led Program

The CEHL Board is committed to a 'Co-op-Led Program' to make sure that how we deliver now, and how we plan-for-the future reflects what is important to co-ops.

The Program changes over time, and co-ops have the right and the opportunity to influence and shape its direction.

This is achieved by providing member co-ops opportunities to engage in Program discussions that have greatest influence on Program direction.

i

MORE INFORMATION

For a complete understanding of the CEHL Co-operative Housing Program also read the following Fact Sheets:

- + Program Framework
- + Program Governance
- + Program Influence